

- In addition to routine checks for each use, PPE should regularly undergo a detailed inspection by a competent person. Petzl recommends an inspection every 12 months and after any exceptional event in the life of the product.
  - PPE inspection should be conducted with the manufacturer's Instructions for Use.
- Download the instructions at [PETZL.COM](https://www.petzl.com).



## ANCHOR STRAPS

### 1. Known product history

Any PPE showing unexpected degradation should be quarantined, pending a detailed inspection.

The user should:

- Provide precise information on the usage conditions.
  - Report any exceptional event regarding his PPE.
- (Examples: fall or fall arrest, use or storage at extreme temperatures, modification outside manufacturer's facilities...).

### 2. Preliminary observations

Verify the presence and legibility of the serial number and the CE mark.

**Attention**, the serial number code on our products is evolving. Two types of code will coexist. See below for details on each serial number code.

Code A:

00 000 AA 0000

Year of manufacture	00	000	AA	0000
Day of manufacture				
Name of Inspector				
Incrementation				

Code B:

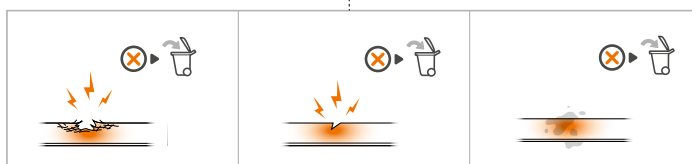
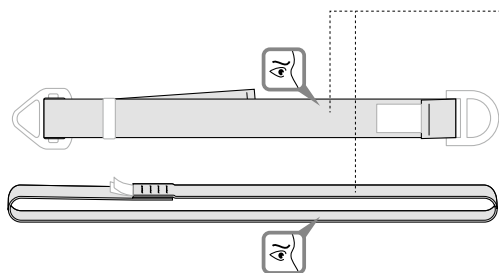
00 A 0000000 000

Year of manufacture	00	A	0000000	000
Month of manufacture				
Batch number				
Incrementation				

Verify that the product lifetime has not been exceeded.  
 Compare with a new product to verify there are no modifications or missing parts.

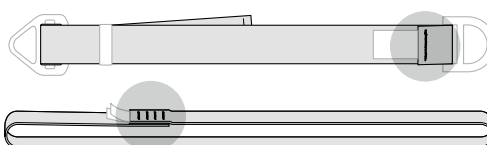
### 3. Checking the condition of the strap

- Check the condition of the strap along its entire length: look for cuts, wear and damage due to use, to heat, to chemicals... Be particularly careful to check for cut fibers.



etc...

- Check the condition of the safety stitching on both sides. Look for any threads that are loose, worn, or cut.

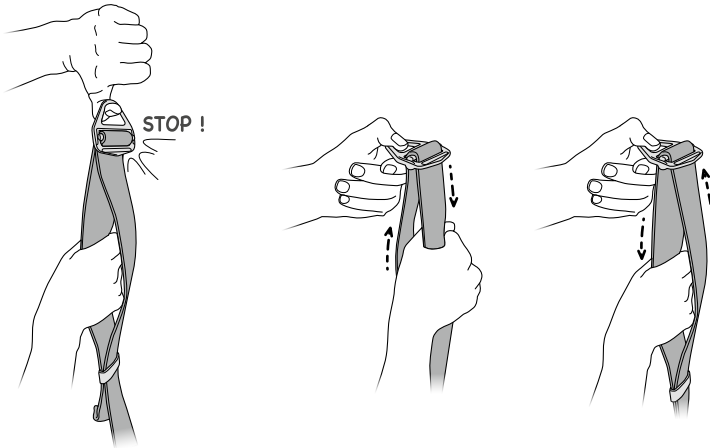


#### 4. Checking the attachment points and adjustment buckle (depending on the model)

- Check the condition of the attachment points and of the adjustment buckle: marks, cracks, wear, deformation, corrosion...

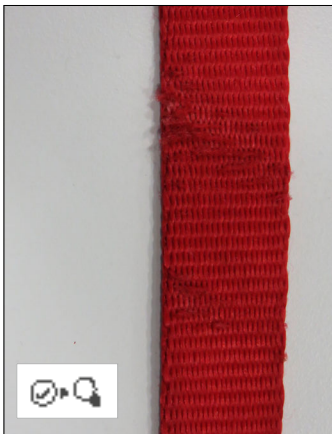


- Verify that the adjustment buckle operates properly.



#### 5. Appendix: examples of straps that are worn out, or that should be retired

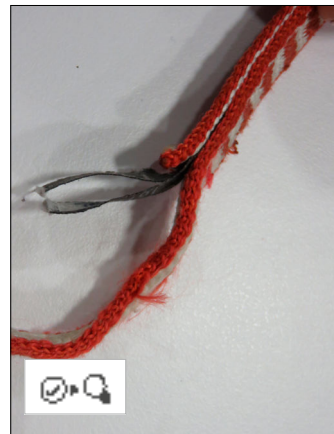
- Frayed webbing



- Frayed webbing



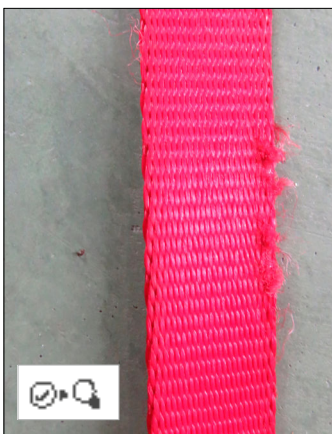
- Cut threads



- Frayed webbing



- Frayed webbing



- Fuzzy area



- Fuzzy area

