

- In addition to routine checks for each use, PPE should regularly undergo a detailed inspection by a competent person. Petzl recommends an inspection every 12 months and after any exceptional event in the life of the product.
 - PPE inspection should be conducted with the manufacturer's Instructions for Use.
- Download the instructions at [PETZL.COM](https://www.petzl.com).



ASAP'SORBER

1. Known product history

Any PPE showing unexpected degradation should be quarantined, pending a detailed inspection.

The user should:

- Provide precise information on the usage conditions.
 - Report any exceptional event regarding his PPE.
- (Examples: fall or fall arrest, use or storage at extreme temperatures, modification outside manufacturer's facilities...).

2. Preliminary observations

Verify the presence and legibility of the serial number and the CE mark.

Attention, the serial number code on our products is evolving. Two types of code will coexist. See below for details on each serial number code.

Code A:

00 000 AA 0000

Year of manufacture
 Day of manufacture
 Name of Inspector
 Incrementation

Code B:

00 A 0000000 000

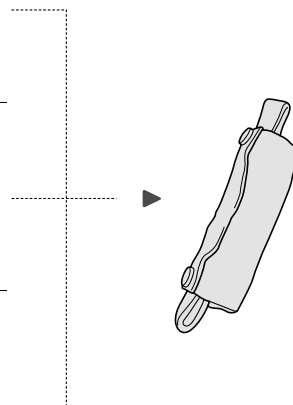
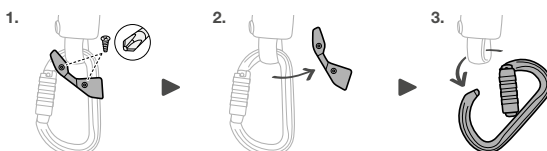
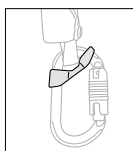
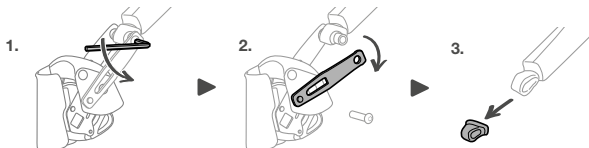
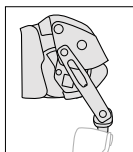
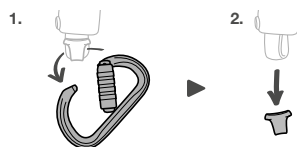
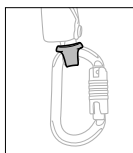
Year of manufacture
 Month of manufacture
 Batch number
 Incrementation

Verify that the product lifetime has not been exceeded.

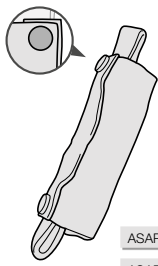
Compare with a new product to verify there are no modifications or missing parts.

3. Preparation

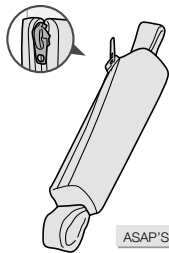
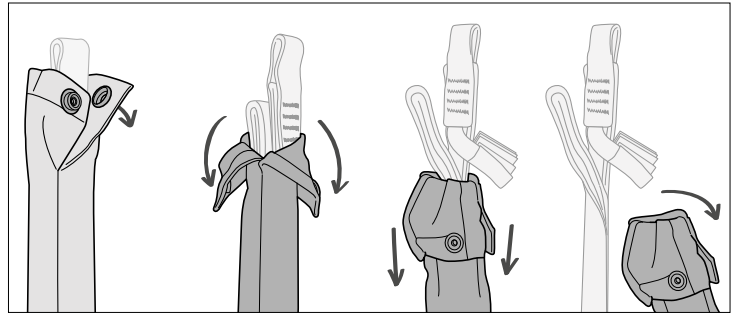
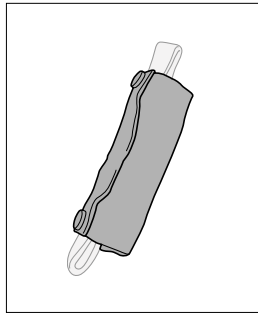
- Depending on your model, remove the CAPTIVs, carabiners and STRING, or remove the ASAP'SORBER from the ASAP LOCK.



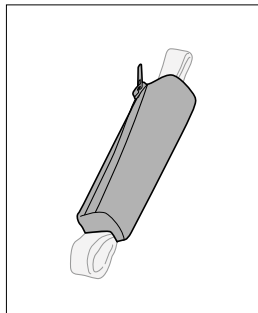
4. Checking the condition of the energy absorber



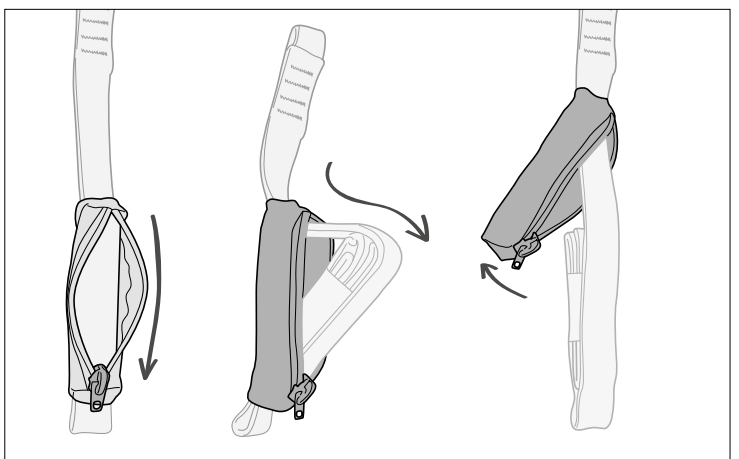
ASAP'SORBER 20 international version
ASAP'SORBER 40 international version
ASAP'SORBER AXESS



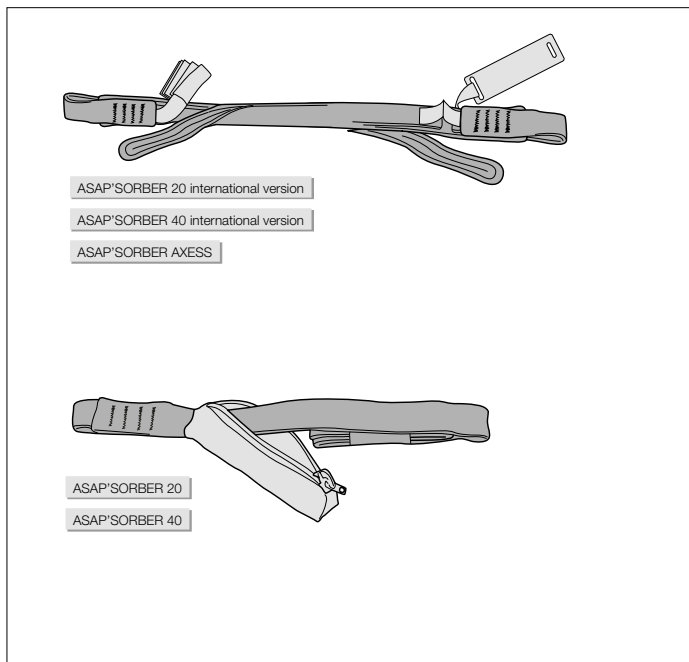
ASAP'SORBER 20
ASAP'SORBER 40



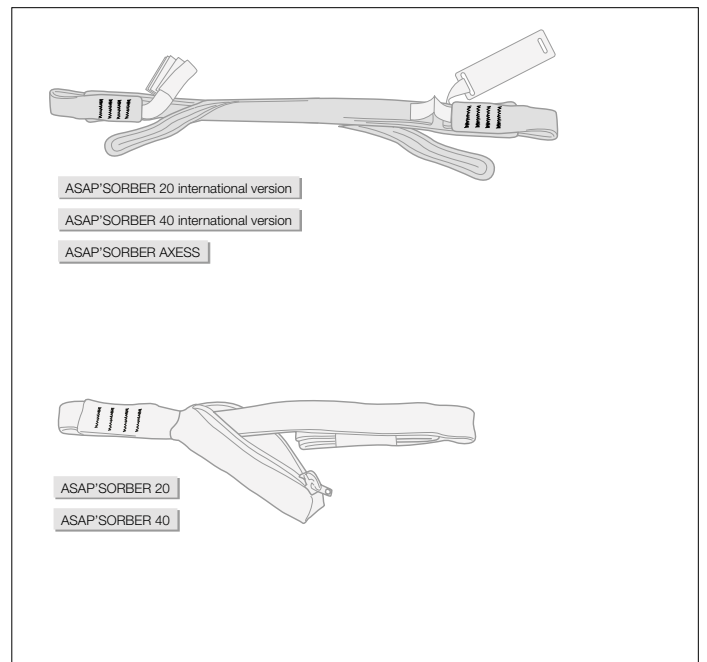
- Check the condition of the pouch. Look for wear and damage due to use (cuts, fuzziness, signs of chemicals...).



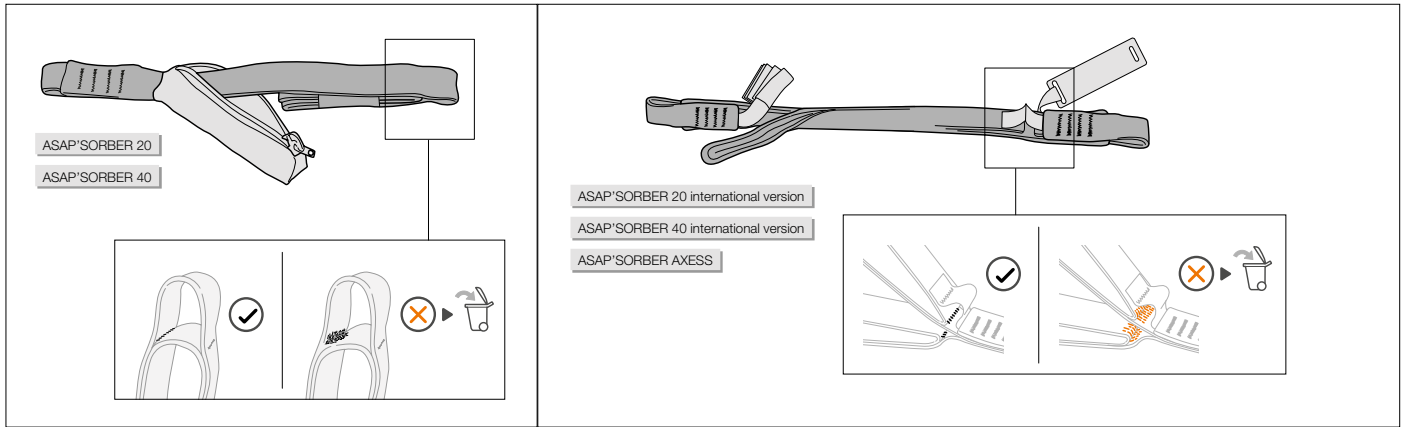
- Open the pouch and pull out the energy absorber.



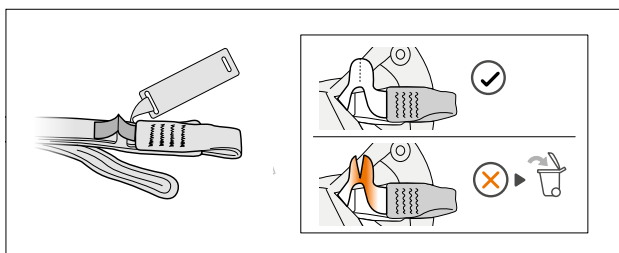
- Check the condition of the energy absorber. Look for wear and damage due to use (cuts, fuzziness, signs of chemicals...).



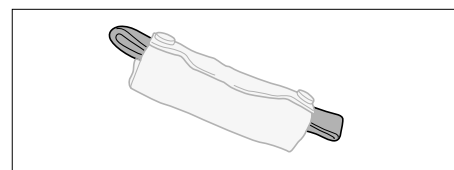
- Check the condition of the safety stitching on both sides. Look for any threads that are loose, worn, or cut.



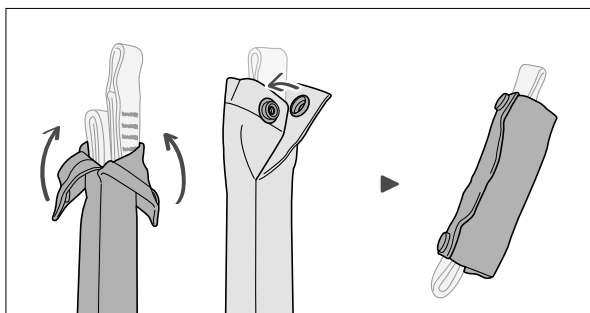
- Verify that the energy absorber has not sustained an impact load (verify that none of the fabric between the straps has been torn).



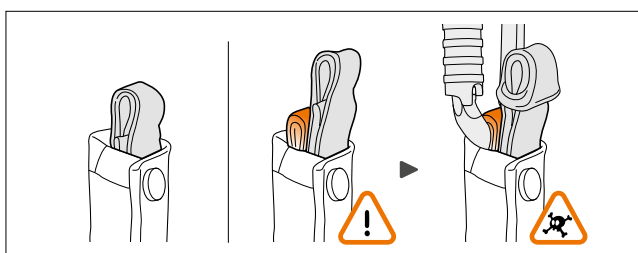
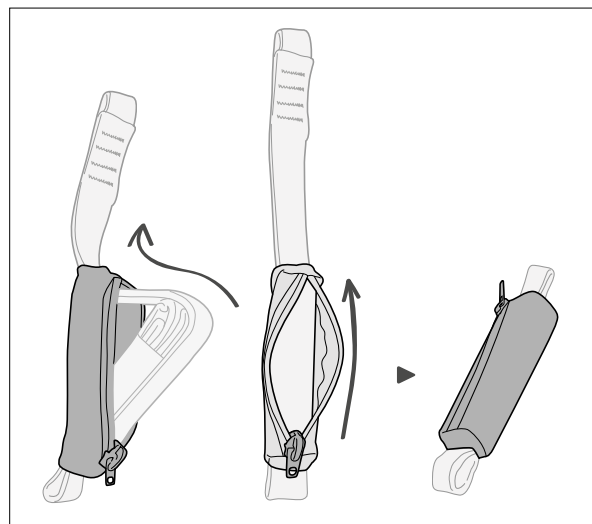
- On the ASAP'SORBER international version and ASAP'SORBER AXESS, verify that the fall indicator has not been torn.



- Check the condition of the connection points. Look for wear and damage due to use (cuts, fuzziness, signs of chemicals...).

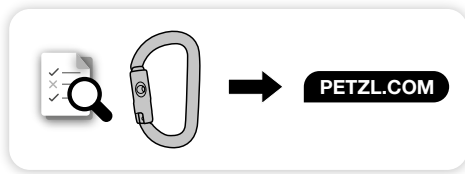


- Put the energy absorber back in the pouch and close it.



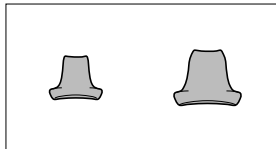
- Verify that all of the energy absorber webbing is properly protected in the pouch.

5. Checking the condition of the connectors

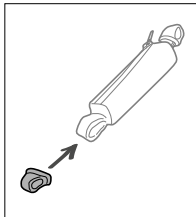


- For connector inspection, see the inspection form for your connector model at Petzl.com.

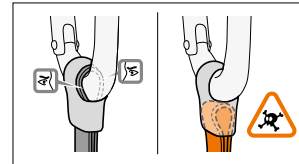
6. Checking the protection elements



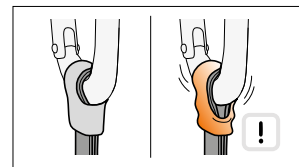
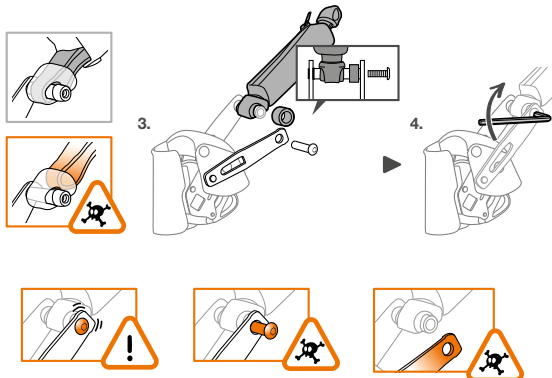
- Check the condition of the STRINGs.



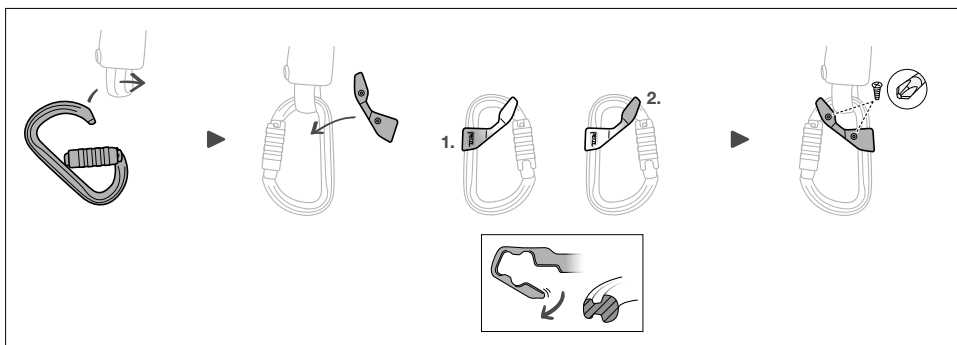
- Reinstall the STRINGs on the attachment points.



- Verify that the connector/sling/STRING assembly is correct.



- Verify that the STRING correctly positions the connector.



- Reinstall the connectors. If applicable, reinstall the CAPTIVs on the connectors.

7. Appendix

- Worn pouch, absorber is unprotected



- Worn pouch, absorber is unprotected



- Stitching OK



- Stitching OK



- Worn stitching



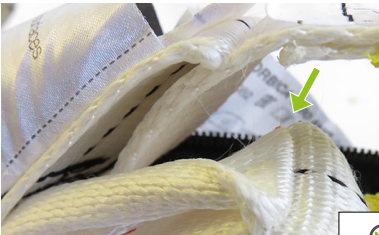
- Tear-webbing is intact



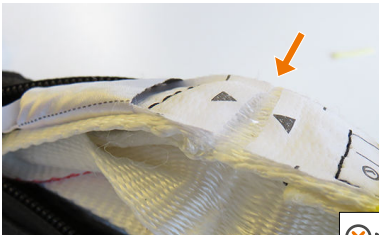
- Absorber has sustained an impact load; absorber has started to tear



- No tearing of the energy absorber



- Absorber has sustained an impact load; absorber has started to tear



- Absorber has sustained an impact load; absorber has started to tear

