

- In addition to routine checks for each use, PPE should regularly undergo a detailed inspection by a competent person.

Petzl recommends an inspection every 12 months and after any exceptional event in the life of the product.

- PPE inspection should be done with the manufacturer's instructions available for reference. Download the instructions at [PETZL.COM](http://PETZL.COM)



## PULLEYS

### 1. Known product history

Any PPE showing unexpected degradation should be quarantined, pending a detailed inspection.

The user should:

- Provide precise information on the usage conditions.
- Report any exceptional event regarding his PPE.

(Examples: fall or fall arrest, use or storage at extreme temperatures, modification outside manufacturer's facilities, etc.).

### 2. Preliminary observations

Verify the presence and legibility of the serial number and the CE mark.

**Attention**, the serial number code on our products is evolving. Two types of code will coexist. See below for details on each serial number code.

Code A:

00 000 AA 0000

|                     |       |
|---------------------|-------|
| Year of manufacture | ..... |
| Day of manufacture  | ..... |
| Name of Inspector   | ..... |
| Incrementation      | ..... |

Code B:

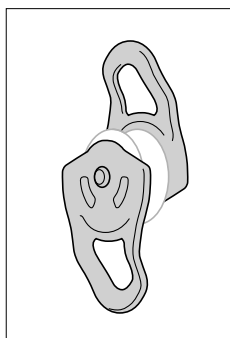
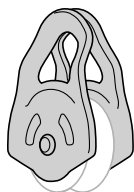
00 A 0000000 000

|                      |       |
|----------------------|-------|
| Year of manufacture  | ..... |
| Month of manufacture | ..... |
| Batch number         | ..... |
| Incrementation       | ..... |

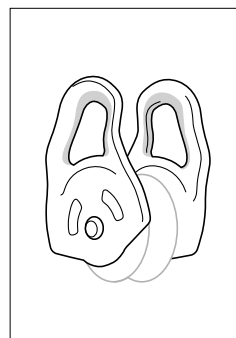
Verify that the product lifetime has not been exceeded.

Compare with a new product to verify there are no modifications or missing parts.

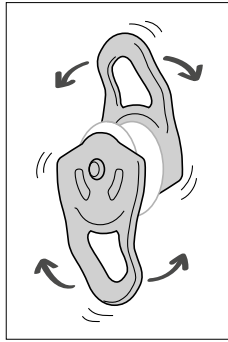
### 3. Checking the condition of the side plates



- Check the condition of the side plates (marks, deformation, cracks, corrosion, wear...).



- Check the condition of the attachment holes (marks, deformation, cracks, corrosion...).

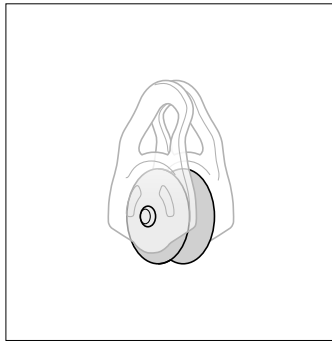
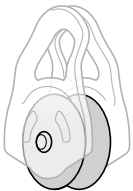


- For pulleys with moving side plates, verify that the side plates rotate properly.

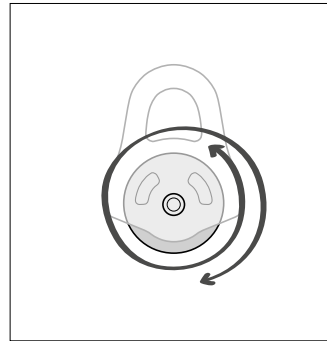


- Check the condition of the rivets (marks, deformation, cracks, corrosion, absence of play...).

#### 4. Checking the condition of the sheave

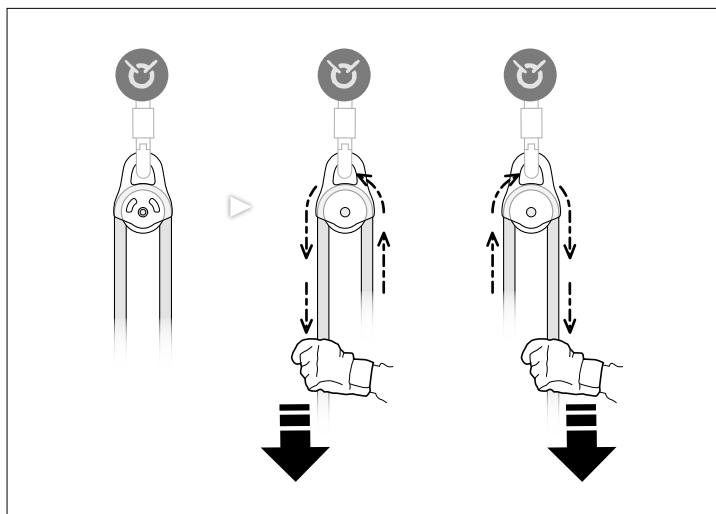


- Check the condition of the sheave (marks, deformation, corrosion, absence of foreign bodies...).



- Verify that the sheave turns freely.

#### 5. Function check



- Install your pulley on an anchor and install a compatible rope around the sheave.
- Circulate the rope in both directions.